

400 MHz Photoreceiver with InGaAs-PIN Photodiode



The picture shows model HCA-S-400M-IN-FS.
The photoreceiver will be delivered without post holder and post.

<p>Features</p>	<ul style="list-style-type: none"> • InGaAs-PIN photodiode • Bandwidth DC – 400 MHz • Amplifier transimpedance gain 5.0×10^3 V/A • Max. conversion gain 4.8×10^3 V/W @ 1550 nm • Spectral range 900 – 1700 nm • Free-space input 1.035"-40 threaded, alternatively 25 mm diameter unthreaded • Fiber optic input available as permanently mounted FC-input • UNC 8-32 and M4 tapped holes for mounting on standard posts with metric and imperial thread
<p>Applications</p>	<ul style="list-style-type: none"> • Spectroscopy • Fast pulse and transient measurements • Optical triggering • Optical front-end for oscilloscopes, A/D converters and HF lock-in amplifiers
<p>Block Diagram</p>	

BS01-HCA-S_R02

400 MHz Photoreceiver with InGaAs-PIN Photodiode

Available Versions

HCA-S-400M-IN-FST

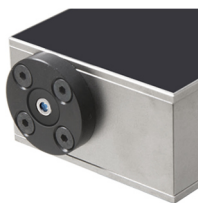
1.035"-40 threaded flange for free space applications. Compatible with many optical standard accessories.



Picture shows 1.035"-40 threaded flange with internally threaded coupler ring (outer diameter 30 mm)

HCA-S-400M-IN-FS

25 mm dia. unthreaded flange for free space applications. Compatible with many optical standard accessories.



Picture shows unthreaded flange with 25 mm diameter

HCA-S-400M-IN-FC

Fix/permanent FC fiber connector for high coupling efficiency and excellent conversion gain accuracy.



Related Models

HCA-S-400M-SI-FST

Si-PIN, Ø 0.8 mm, 320 – 1000 nm free space input, 1.035"-40 threaded flange

HCA-S-400M-SI-FS

Si-PIN, Ø 0.8 mm, 320 – 1000 nm free space input, 25 mm dia. unthreaded flange

HCA-S-400M-SI-FC

Si-PIN, Ø 0.8 mm, 320 – 1000 nm FC fiber connector (fix/permanent)

HCA-S-400M-SI-SMA

Si-PIN, Ø 0.8 mm, 320 – 1000 nm SMA fiber connector (fix/permanent)

400 MHz Photoreceiver with InGaAs-PIN Photodiode

Available Accessories

PRA-PAP



Alternative mounting option:
Post adapter plate, easy to mount
on FEMTO photoreceiver series OE,
FWPR, PWPR, HCA-S and LCA-S.

PS-15-25-L



Power supply
Input: 100 – 240 VAC
Output: ±15 VDC

Specifications

Test conditions

$V_S = \pm 15\text{ V}$, $T_A = 25\text{ }^\circ\text{C}$, output load impedance $50\ \Omega$,
warm-up 20 minutes (min. 10 minutes recommended)

Gain

Transimpedance gain

$5.0 \times 10^3\text{ V/A}$ (@ output load $50\ \Omega$)

Gain accuracy

±1 % (electrical)

Conversion gain

$4.8 \times 10^3\text{ V/W typ.}$ (@ 1550 nm, output load $50\ \Omega$)

Frequency Response

Lower cut-off frequency

DC

Upper cut-off frequency (–3 dB)

400 MHz (±15 %)

Gain flatness

±1 dB

Time Response

Rise/fall time (10 % – 90 %)

1.0 ns

Input

Noise equivalent power (NEP)

24 pW/√Hz (@ 1550 nm, 100 MHz)

Optical saturation power

200 μW (for linear amplification, @ 1550 nm)

Input offset compensation range

±200 μA, adjustable by offset potentiometer

Detector

Detector

InGaAs-PIN photodiode

Active area (FS/FST version)

∅ 0.3 mm

Active area (FC version)

integrated ball lens

suitable for fibers up to 62.5 μm core diameter

Spectral range

900 – 1700 nm

Max. sensitivity

0.95 A/W typ. (@ 1550 nm)

Output

Output voltage range

±1.0 V (@ $50\ \Omega$ output load)

for linear operation and low harmonic distortion

Max. output voltage range

±1.5 V (@ $50\ \Omega$ output load)

Output impedance

$50\ \Omega$ (terminate with $50\ \Omega$ load)

Output noise

3 mV_{RMS} (20 mV_{PP}) typ. (@ $50\ \Omega$ load, no signal on
detector, measurement bandwidth 1.5 GHz)

Input Flange

Material

1.4305 stainless steel, nickel-plated (FST flange)

AlMg4.5Mn, nickel-plated (FS flange)

Coupler Ring
(FST version only)

Material

1.4305 stainless steel, glass bead blasted

Power Supply

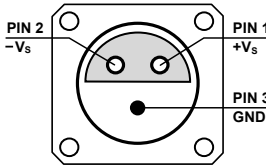
Supply voltage

±15 V (±14.5 V ... ±16.5 V)

Supply current

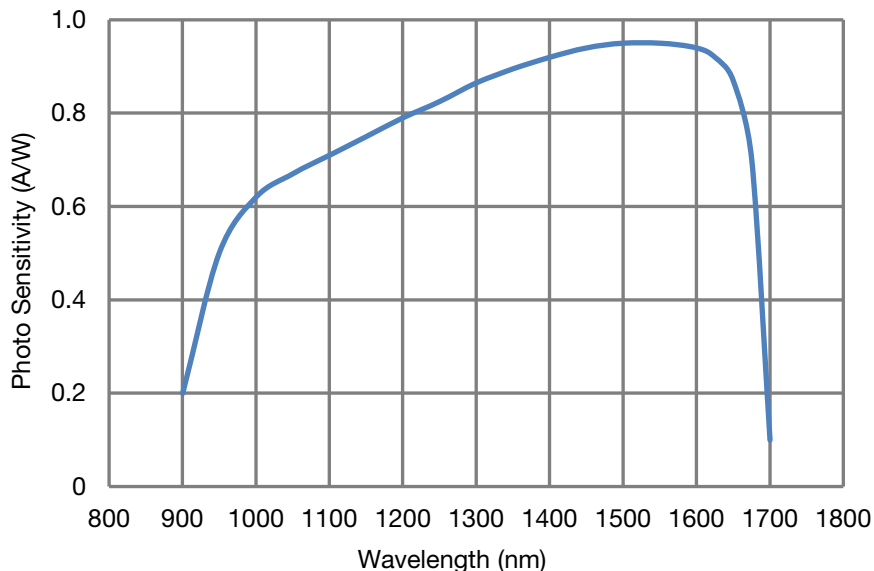
±55 mA (depends on operating conditions,
recommended power supply capability min. ±150 mA)

400 MHz Photoreceiver with InGaAs-PIN Photodiode

Specifications (continued)	
Case	<p>Weight 209 g (0.46 lbs) HCA-S-400M-IN-FST incl. coupler ring 196 g (0.43 lbs) HCA-S-400M-IN-FS 188 g (0.41 lbs) HCA-S-400M-IN-FC</p> <p>Material AlMg4.5Mn, nickel-plated</p>
Temperature Range	<p>Storage temperature -30 °C ... +85 °C Operating temperature 0 °C ... +60 °C</p>
Absolute Maximum Ratings	<p>Optical input power (CW) 10 mW Power supply voltage ±20 V</p>
Connectors	<p>Input HCA-S-400M-IN-FST 1.035"-40 threaded flange for free space applications and for use with various types of optical standard accessories</p> <p>HCA-S-400M-IN-FS 25 mm dia. unthreaded flange for free space applications</p> <p>HCA-S-400M-IN-FC FC fiber optic connector (fix/permanent, FC/PC and FC/APC compatible)</p> <p>Output BNC jack (female)</p> <p>Power supply LEMO® series 1S, 3-pin fixed socket (mating plug type: FFA.1S.303.CLAC52)</p> <div style="text-align: center;">  <p style="margin-left: 100px;">Pin 1: +15 V Pin 2: -15 V Pin 3: GND</p> </div>
Scope of Delivery	HCA-S-400M-IN, internally threaded coupler ring (FST version only), LEMO® 3-pin connector, datasheet, transport package
Ordering Information	<p>HCA-S-400M-IN-FST 1.035"-40 threaded flange for free space applications and for use with various types of optical standard accessories.</p> <p>HCA-S-400M-IN-FS 25 mm dia. unthreaded flange for free space applications.</p> <p>HCA-S-400M-IN-FC FC fiber optic connector (fix/permanent, FC/PC and FC/APC compatible).</p>

400 MHz Photoreceiver with InGaAs-PIN Photodiode

Spectral Responsivity



DB-Sens-HCA-S-400M-IN_R01

Typical Performance Characteristics

Frequency response

Offs 5.00 dB * RBW 300 kHz
 Att 0 dB VBW 1 MHz M1[1] -3.06 dB
 Ref -15.00 dBm SWT 10ms 400.000000000 MHz



Start 10.0 MHz

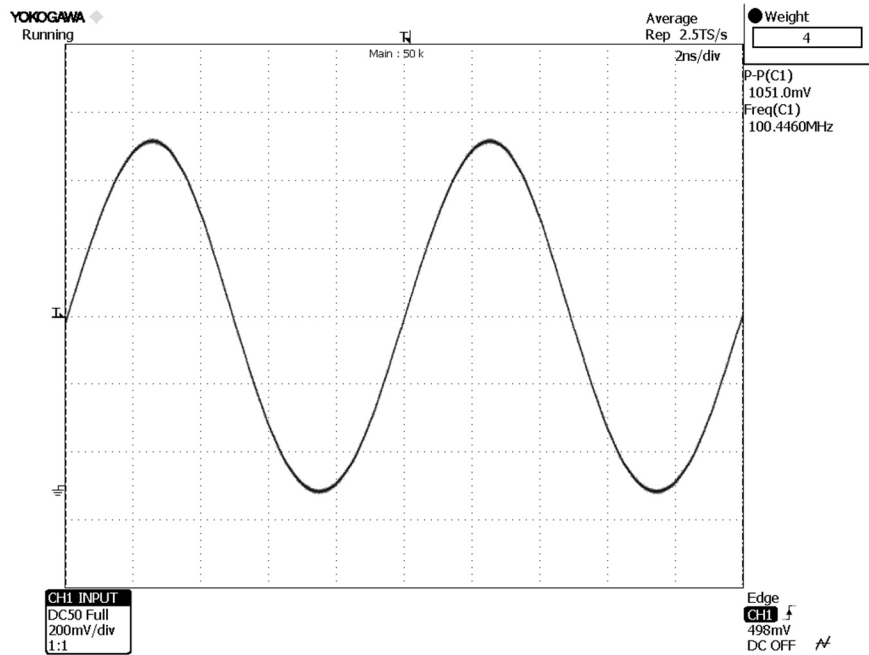
Stop 800.0 MHz

PD-HCA-S-400M-IN-bw_R01

400 MHz Photoreceiver with InGaAs-PIN Photodiode

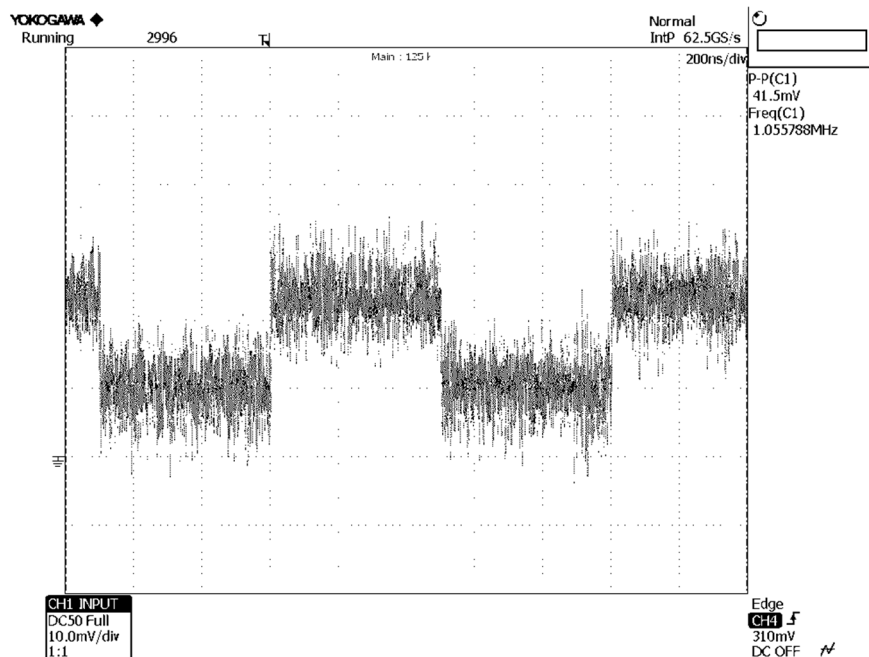
Typical Performance
Characteristics (continued)

Large signal response
output signal for 100 MHz, 210 μ W modulated optical input signal
(with 4 times averaging)



PD-HCA-S-400M-IN-large-sinus_R01

Small signal response
output signal for 3 μ W modulated optical input signal, 1 MHz square wave, without averaging

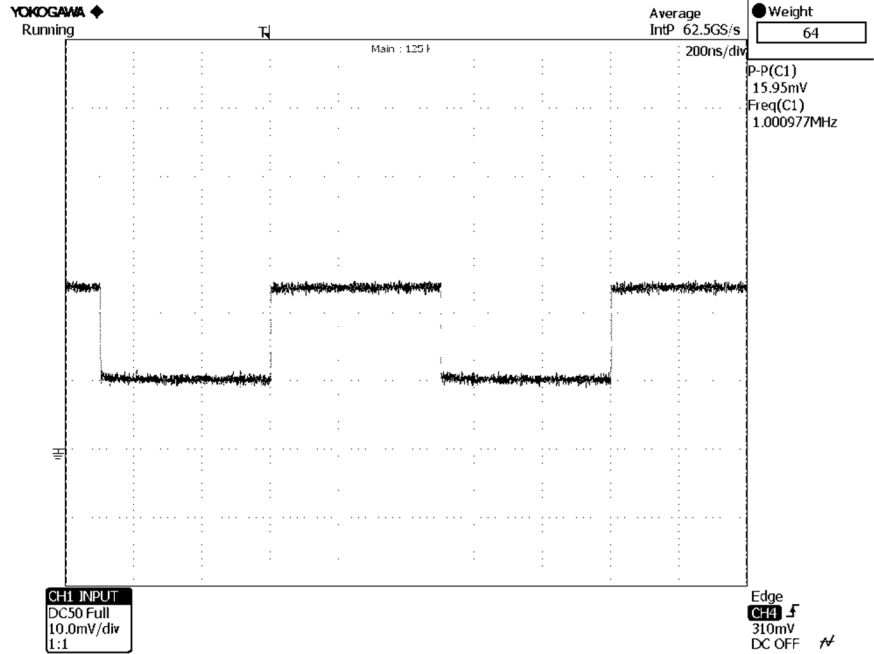


PD-HCA-S-400M-IN-noise-square_R01

400 MHz Photoreceiver with InGaAs-PIN Photodiode

Typical Performance
Characteristics (continued)

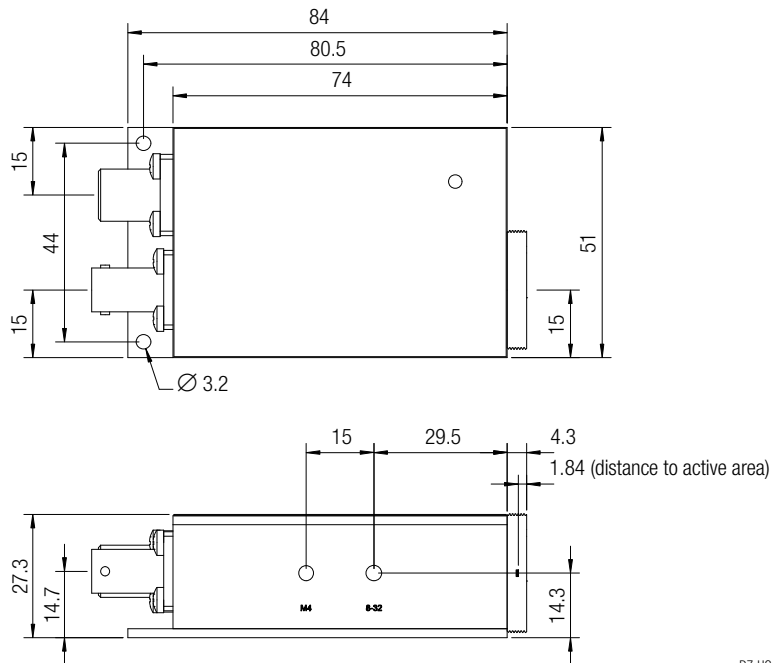
Small signal response
output signal for 3 μ W modulated optical input signal, 1 MHz square wave,
with 64 times averaging



PD-HCA-S-400M-IN-noise-square_average_R01

Dimensions

HCA-S-400M-IN-FST (1.035"-40 threaded free space input)



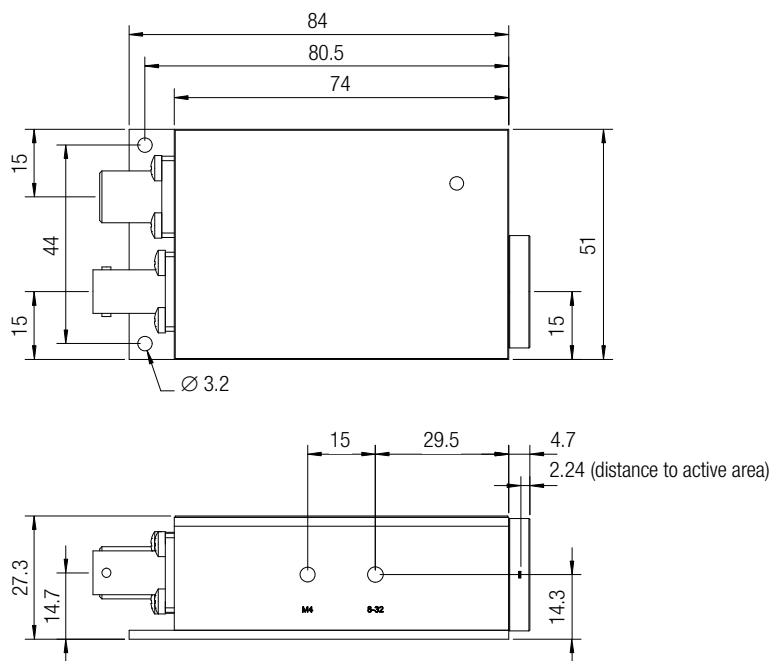
DZ-HCA-S-X00-IN_FST_R1

all dimensions in mm unless otherwise noted

400 MHz Photoreceiver with InGaAs-PIN Photodiode

Dimensions (continued)

HCA-S-400M-IN-FS (25 mm dia. unthreaded free space input)



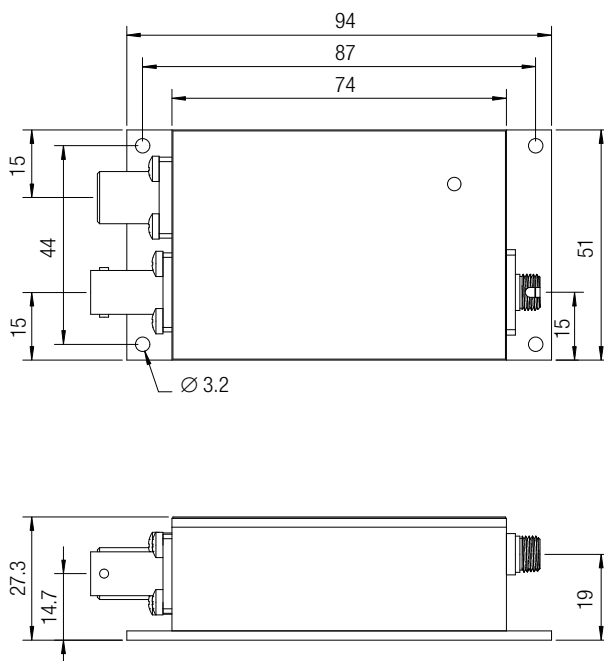
DZ-HCA-S-X00-IN_FS_R1

all dimensions in mm unless otherwise noted

400 MHz Photoreceiver with InGaAs-PIN Photodiode

Dimensions (continued)

HCA-S-400M-IN-FC (FC fiber optic connector)



DZ-HCA-S-XX-XX_FC_R1

all dimensions in mm unless otherwise noted

FEMTO Messtechnik GmbH
Klosterstr. 64
10179 Berlin · Germany
Phone: +49 30 280 4711-0
Fax: +49 30 280 4711-11
Email: info@femto.de
www.femto.de

Specifications are subject to change without notice. Information provided herein is believed to be accurate and reliable. However, no responsibility is assumed by FEMTO Messtechnik GmbH for its use, nor for any infringement of patents or other rights of third parties which may result from its use. No license is granted by implication or otherwise under any patent or patent rights of FEMTO Messtechnik GmbH. Product names mentioned may also be trademarks used here for identification purposes only.

© by FEMTO Messtechnik GmbH · Printed in Germany