

1625nm High Power Laser Source (Coaxial Pigtail Package)

DL-E-FPL63100T-FS

FEATURES

- Pulsed peak power output >100mW
- For Pulsed and CW applications
- Compact TO60 Package with integrated TEC cooler and fiber pigtail output
- For Test and Measurement Instrument

The DenseLight DL-E-FPL63100T-FS is a cooled High Power 1625nm Laser Source. High pigtail output of >100mW Pulsed peak power (10 μ s, DC=1%). It consists of a laser diode, with a built-in TEC cooler, back facet power monitor and integrated optical isolator.

ELECTRICAL AND OPTICAL CHARACTERISTICS

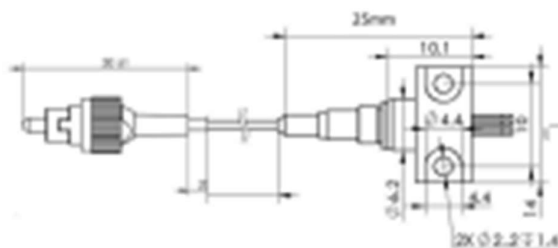
(Test Condition: T_{LD}=25°C, PW=10 μ s, DC=1%, unless otherwise indicated)

Parameter	Symbol	Test Conditions	MIN	TYP	MAX	Unit
Optical Power (Pulsed)	P		100	-	-	mW
Optical Power (CW)	P _{CW}	CW, 400mA	40	-	-	mW
Operating Current	I _{OP}		-	-	1000	mA
Threshold Current	I _{th}		-	45	-	mA
Operation Voltage	V _{OP}		-	-	2.5	V
Center Wavelength	λ_c		1615	1625	1635	nm
Spectral Width	$\Delta\lambda$		-	4	-	nm

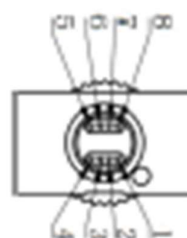
ABSOLUTE MAXIMUM RATINGS

Parameter	Symbol	Rating	Unit
Laser forward current	I _F	1100	mA
Laser reverse voltage	V _R	2	V
Laser forward voltage	V _F	3	V
Operation temperature	T _C	0 ~ +60	°C

PACKAGE



Bottom View



Pin	Pin Assignment
1	TEC(+)
2	Thermistor
3	PD Cathode
4	PD Anode
5	LD Cathode
6	LD Anode
7	Thermistor
8	TEC(-)